



GEZE PERKEO AND LINEAR GUIDES
THE BALL BEARING SLIDING DOOR SYSTEM
FOR EXTREMELY DURABLE, PRECISE GUIDES



GEZE PERKEO AND LINEAR GUIDES

CONTENTS

GEZE PERKEO – Ball bearing sliding door systems

PERKEO 75 sizes 1, 2, 3	4
Standard installation	5
PERKEO 75 sizes 1, 2, 3 – Ordering information	6
PERKEO 75 Type 14/ Type 14a	7
PERKEO sizes 1, 2, 4	8
Standard installation	9
PERKEO sizes 1, 2, 4 – Ordering information	10

GEZE Linear guides

Linear guides RP 75 and RP	11
Linear guides P 75 1, 2, 3	12
Linear guides P 1, 2, 4	14

GEZE PERKEO AND LINEAR GUIDES

GEZE PERKEO 75 sizes 1, 2, 3

The Perkeo ball bearing sliding door system is characterised by its tiny dimensions, yet capable of great payloads. The entire unit, with a compact and free of play linear ball bearing with axial main load direction, is suited for single and double leaf sliding door systems. Perkeo is used in situations when long-life, extreme durability and precise guides are required, for example, in the construction sector, in industrial systems or vehicle construction.

Product features

- Complete unit consisting of carrier rail and track, cage and ball bearings.
- Low friction value
- Compact design
- Swivel-mounted carrier plates

Application range

- For all sliding doors
- For all door materials
- Wall and ceiling attachment
- For high loads
 - Size 1: 100 or 140 kg*
 - Size 2: 150 or 190 kg*
 - Size 3: 200 or 250 kg*
- Carrier plates are swivel mounted, so hardware also suitable for inclined walls and ceilings. (see Fig. 04-2)

* 3 pcs. for leaves wider than 1500 mm

Standard version / Scope of delivery

Sliding door hardware, complete with buffers, hanger bolts, carrier plates, attachment angles, floor guide.

Size 1: carrier rail and track galvanized

Size 2 and 3: steel, polished

Special version

For a wide range of applications in the mechanical engineering, plant engineering, automotive and ship-building industries.



Fig. 04-1 PERKEO 75 size 1

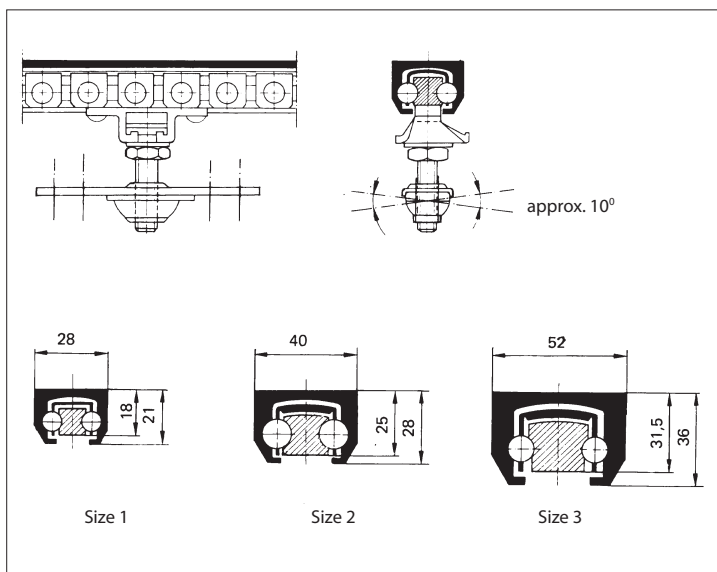


Fig. 04-2

GEZE PERKEO AND LINEAR GUIDES

Standard installation

Fig. 05-1 shows how the GEZE PERKEO 75 is installed to carry a single-leaf, wooden sliding door:

- 1) Buffer with base
- 2) Floor guide
- 3) Carrier plate, swivelling
- 4) Limit stop (standard)
- 5) Rubber buffer (on request)

The hardware is delivered with limit stops as standard. It can be fixed to the wall with attachment angles, or directly to the ceiling.
A second buffer must be installed on a level with the horizontal centreline of the door or at the bottom so that the door leaf is stopped simultaneously at the top and bottom.

Note:

Removable panels must be installed to permit access to wall recesses.

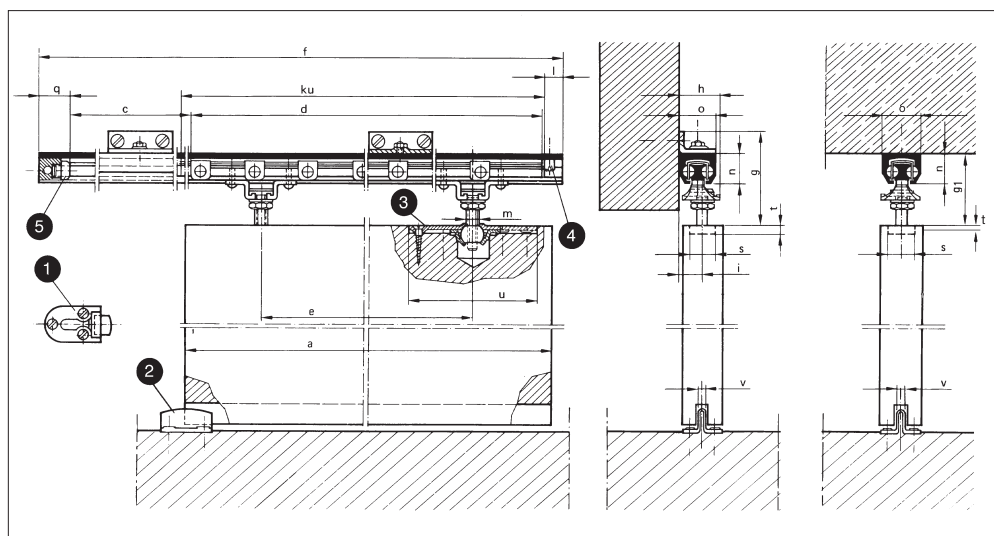


Fig. 05-1

Standard sizes (mm)

Leaf width a travel c	Length of carrier rail f		Length of track d		Carrier pitch e	Door weight max. kg		
	s. 1	s. 2-3	s. 1	s. 2-3		s. 1	s. 2	s. 3
310 - 400	740	750	310	310	210	100	150	200
410 - 500	892	910	362	370	260	100	150	200
510 - 600	1078	1090	448	450	320	100	150	200
610 - 700	1230	1240	500	500	350	100	150	200
710 - 800	1365	1390	535	550	390	100	150	200
810 - 900	1517	1540	587	600	440	100	150	200
910 - 1000	1686	1690	656	650	490	100	150	200
1010 - 1100	1821	1840	691	700	530	100	150	200
1110 - 1200	2041	2040	811	800	630	100	150	200
1210 - 1300	2176	2190	846	850	680	100	150	200
1310 - 1400	2345	2360	915	920	740	100	150	200
1410 - 1500	2497	2510	967	970	790	100	150	200
1510 - 1600	2649	2660	1019	1020	840	140	190	250
1610 - 1700	2835	2840	1105	1100	900	140	190	250
1710 - 1800	2987	3000	1157	1160	960	140	190	250
1810 - 1900	3173	3190	1243	1250	1050	140	190	250
1910 - 2000	3325	3340	1295	1300	1100	140	190	250

(3 suspension rods with e/2 pitch for leaves wider than 1500 mm)

GEZE PERKEO 75 sizes 1, 2, 3

Size	Range of adjustment (mm)			Installation sizes (mm)									
	Wall attachment		Ceiling attachment										
	lateral	vertical	vertical										
	i	g	g1	h	l	m	n	o	q	s	t	u	v
1	12 - 22	63 - 76	48 - 61	31	15	M10	21	28	24	21	5,5	100	7
2	16 - 28	83 - 98	63 - 78	-	20	M12	28	40	33	26	5	150	7
3	19 - 37	96 - 111	71 - 86	-	20	M12	36	52	42	26	5	150	7

GEZE PERKEO AND LINEAR GUIDES

GEZE PERKEO 75 sizes 1, 2, 3 – Ordering information

Description	Leaf width (cm)	ID no. size 1	ID no. size 2	ID no. size 3
Ball bearing sliding door system GEZE PERKEO 75	31 - 40	014338	on request	on request
	41 - 50	014339		
	51 - 60	014340		
	61 - 70	014341		
	71 - 80	014342		
	81 - 90	014343		
	91 - 100	014344		
	101 - 110	014345		
	111 - 120	014346		
	121 - 130	014347		
	131 - 140	014348		
	141 - 150	014349		
	151 - 160	014350		
	161 - 170	014351		
	171 - 180	014352		
	181 - 190	014353		
	191 - 200	014354		

GEZE PERKEO 75 Type 14/Type 14a

This system for double-leaf applications is based on PERKEO 75. It is available as a synchronized (Type 14a) and a non-synchronized (Type 14) version.

Product features

- Two tracks fixed inside a carrier rail
- Type 14 without wire-rope coupling
- Type 14a with wire-rope coupling

Application range

- For double-leaf doors
- Type 14 wall and ceiling attachment
- Type 14a wall attachment

Note:

Removable panels must be installed to permit access to wall recesses.

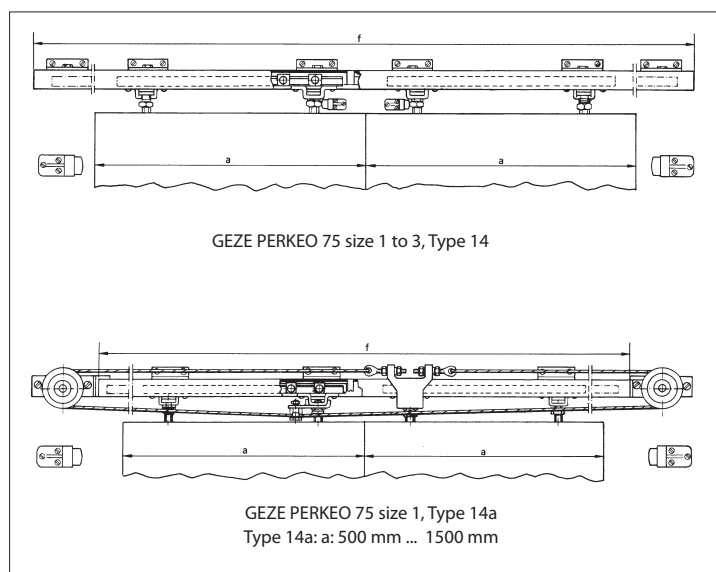


Fig. 07-1

PERKEO 75	Weight of each leaf		
	s. 1	s. 2	s. 3
Type 14	100	150	200
Type 14a	75	-	-

Ordering information

Description	
GEZE PERKEO 75 size 1, Type 14	Width of each leaf ... cm wall and ceiling attachment
GEZE PERKEO 75 size 1, Type 14a	with wire-rope coupling for double-leaf doors wall attachment

GEZE PERKEO AND LINEAR GUIDES

GEZE PERKEO sizes 1, 2, 4

GEZE PERKEO is a compact linear ball bearing system with axial major direction of loading for single-leaf and double-leaf sliding doors. The system is always used when long-lasting heavy duty precision guides will be in demand, for example in the construction sector, in industrial systems or vehicle construction.

Product features

- Complete unit, consisting of carrier rail and track, cage and ball bearings
- Low friction
- Compact design
- Swivelling carrier plates (size 1-2)
- Steel polished; galvanized finish to customer specification

Application range

- For all sliding doors
- For all door materials, e. g. wood, metal, unframed glass
- Wall attachment
- Ceiling attachment to customer specification
- For high loads:
 - Size 1: 75 or 100 kg*
 - Size 2: 100 or 140 kg*
 - Size 4: 240 or 360 kg*
- With swivelling carrier plates (sizes 1-2) the system can also be used for inclined walls or ceilings (see Fig. 08-2)

* 3 pcs. for leaves wider than 1500 mm

Standard version / Scope of delivery

Sliding door hardware complete with buffers, hanger bolts, carrier plates, floor guide, polished steel.

Special version

Available for a wide range of applications in the mechanical engineering, plant engineering and automotive industries: please state intended use.



Fig. 08-1 PERKEO size 1

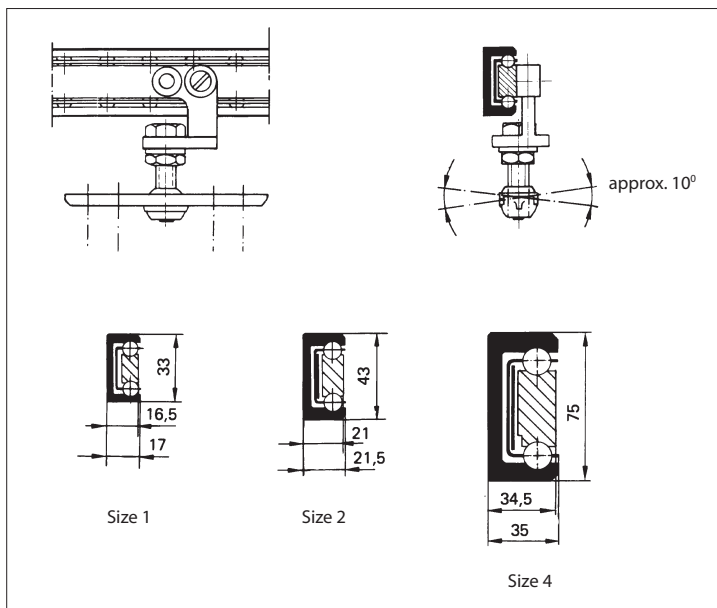


Fig. 08-2

GEZE PERKEO AND LINEAR GUIDES

Standard installation

Fig. 09-1 shows how the GEZE PERKEO is installed to carry a single-leaf wooden sliding door:

- 1) Buffer with base
- 2) Floor guide
- 3) Carrier plate, swivelling (2 pcs.)
- 4) Limit stop
- 5) Rubber buffer (on request)

The hardware may be fixed directly to the wall or to the ceiling with the aid of attachment angles.

A second buffer must be installed on a level with the horizontal centreline of the door or at the bottom, so that the door leaf is stopped simultaneously at the top and bottom.

Note:

Removable panels must be installed to permit access to wall recesses.

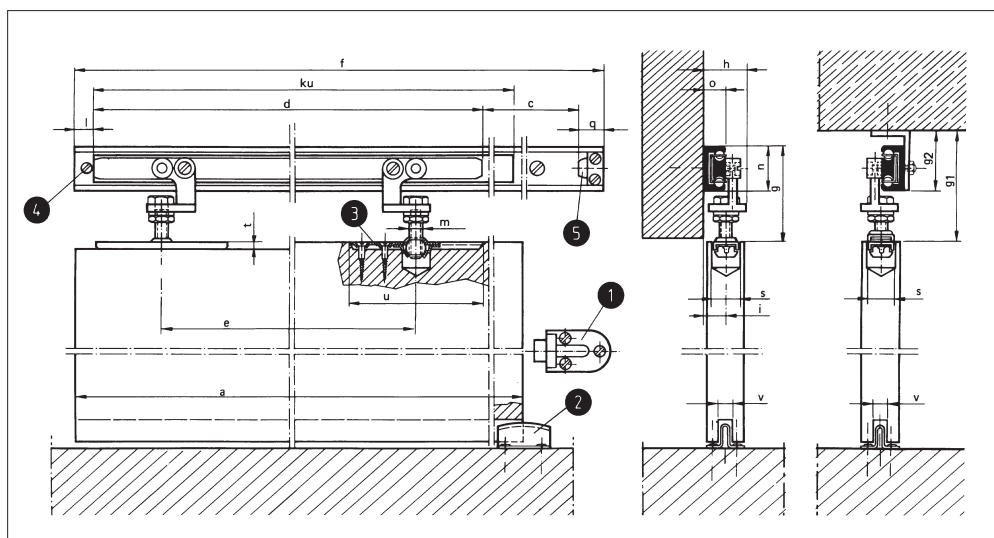


Fig. 09-1

Standard sizes (mm)

Leaf width a travel c	Length of carrier rail f		Length of track d		Carrier pitch e	Door weight max. kg		
a=c	s. 1	s. 2/4	s. 1	s. 2/4	s. 1-4	s. 1	s. 2	s. 4
310 - 400	740	750	310	310	210	75	100	240
410 - 500	892	910	362	370	260	75	100	240
510 - 600	1078	1090	448	450	320	75	100	240
610 - 700	1230	1240	500	500	350	75	100	240
710 - 800	1365	1390	535	550	390	75	100	240
810 - 900	1517	1540	587	600	440	75	100	240
910 - 1000	1686	1690	656	650	490	75	100	240
1010 - 1100	1821	1840	691	700	530	75	100	240
1110 - 1200	2041	2040	811	800	630	75	100	240
1210 - 1300	2176	2190	846	850	680	75	100	240
1310 - 1400	2345	2360	915	920	740	75	100	240
1410 - 1500	2497	2510	967	970	790	75	100	240
1510 - 1600	2649	2660	1019	1020	840	100	140	360
1610 - 1700	2835	2840	1105	1100	900	100	140	360
1710 - 1800	2987	3000	1157	1160	960	100	140	360
1810 - 1900	3173	3190	1243	1250	1050	100	140	360
1910 - 2000	3325	3340	1295	1300	1100	100	140	360

GEZE PERKEO sizes 1, 2, 4

Size	Wall attachment		Ceiling attachment											
	lateral	vertical												
	i	g	g1	g2	h	l	m	n	o	q	s	t	u	v
1	13 - 24	59 - 75	72 - 88	45	34	15	M10	33	17	18	21	5,5	100	7
2	15 - 24	70 - 78	87 - 95	60	37	20	M12	43	21,5	25	26	5	150	7
4	31 - 40	113 - 133	140 - 160	100	57	20	M16	75	35	32	30	8	175	7

GEZE PERKEO AND LINEAR GUIDES

GEZE PERKEO sizes 1, 2, 4 – Ordering information

Description	Leaf width (cm)	Size 1	Size 2	Size 4
Ball bearing sliding door system GEZE PERKEO	31 - 40	on request	on request	on request
	41 - 50			
	51 - 60			
	61 - 70			
	71 - 80			
	81 - 90			
	91 - 100			
	101 - 110			
	111 - 120			
	121 - 130			
	131 - 140			
	141 - 150			
	151 - 160			
	161 - 170			
	171 - 180			
	181 - 190			
191 - 200				
Accessories for GEZE PERKEO				
Ceiling attachment angles	separate, number of attachment angles depends on size and leaf width			

GEZE Linear guides RP 75 and RP

Product features

- Linear roller guide.
The rolls will be moved in the required direction and in the same time the load is borne.
- Roller carriage with carrier and guide rolls
- Deadlock-free and smooth running
- Minor starting resistance
- The guidance consists of a bearing rail and roller carriage with minimum two track supporting rollers and two ball-bearing guide pulleys.
- Several roller carriages per bearing rail possible
- Small installation dimensions
- Easy and uncomplicated installation
- Low frictional coefficient
- Stroke limitation via built-in buffer on request
- Radial roller loads:
 RP 75-1 = 150 N
 RP-1 = 200 N
 RP-2 = 600 N
 RP-4 = 1000 N (single roller carriage)
 rolls for RP-2 even with plastic casing
 (load on request).

Application range

For cases in which an accurate guide for feed and stroke is needed. Particularly suitable for vertical guides and for short sliding parts with long travel as well as for multiple sliding parts in one carrier rail.

Standard version

Made of blank steel. On request the guides can be delivered galvanised (rolls of blank steel only). The linear guide RP-2 is even available as vertical version.

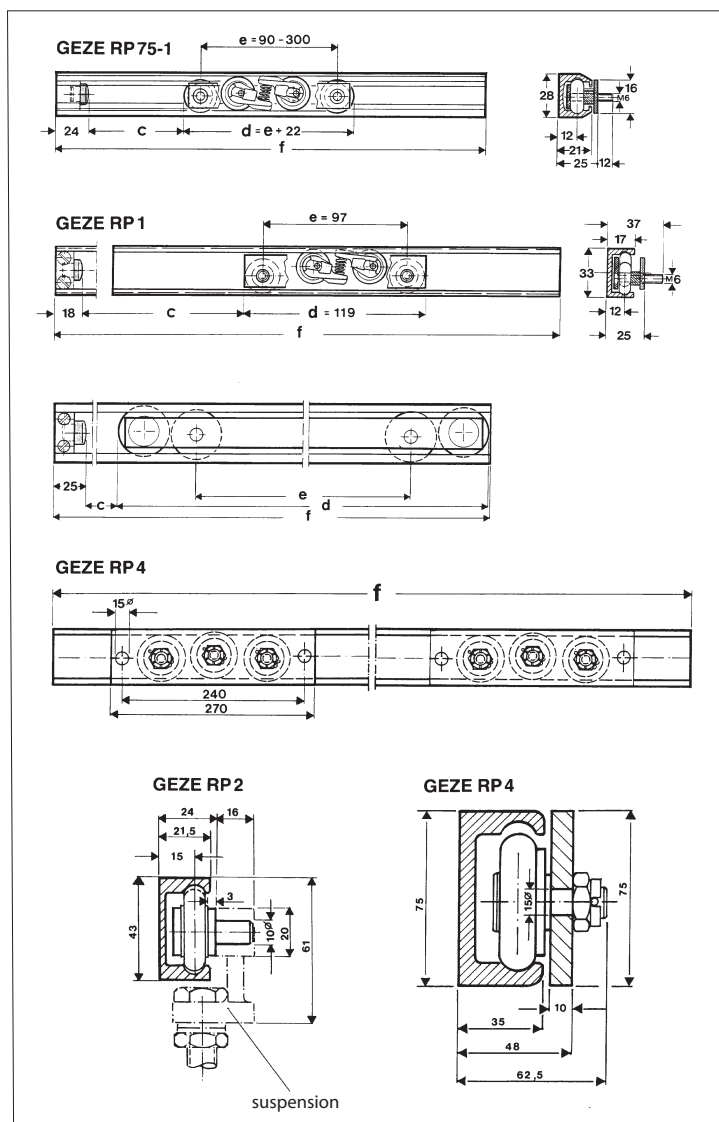


Fig. 11-1

Legend

- c = travel (stroke)
 d = length of roller carriage
 e = suspension clearance
 f = length of carrier rail

GEZE PERKEO AND LINEAR GUIDES

GEZE Linear guides P 75, 1, 2, 3

Product features

- Linear parallel guide.
The structural units will be moved in the required direction and in the same time the load is borne.
- The guidance consists of carrier rail and track with steel balls which are guided between, according to the principle of elongated ball-bearing.
- Ball-bearing carrier guides and tracks assure a deadlock-free running by means of a low friction coefficient and minor starting resistance.
- Small installation dimensions
- Easy and uncomplicated installation
- Low frictional coefficient
- Stroke limitation by built-in buffer

Application range

For cases in which a high load capacity and an accurate heading or stroke movement is needed.

Standard version

Made of blank steel and galvanised on request.

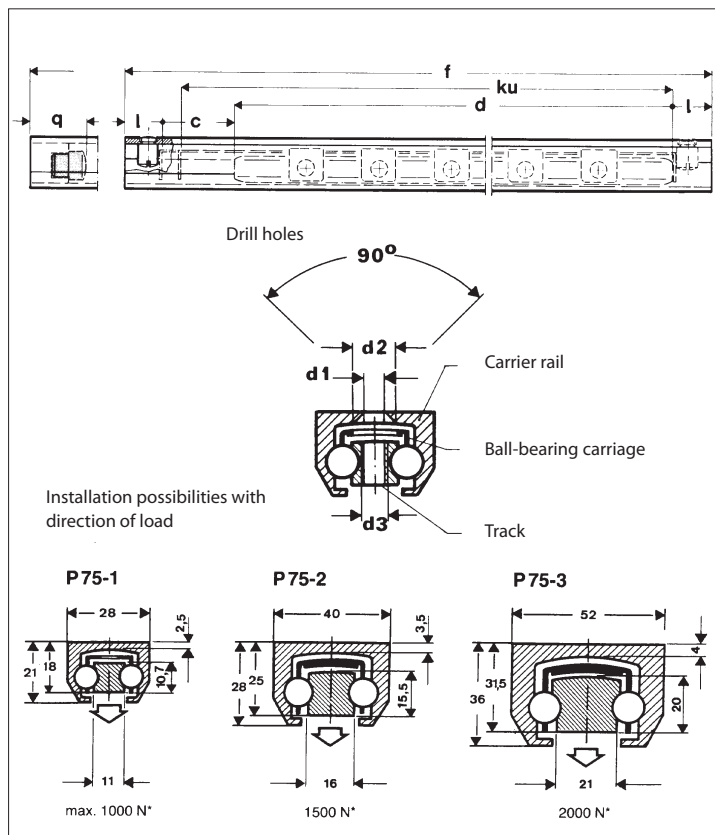


Fig. 12-1

Legend

- c = travel (stroke)
- d = length of track
- f = length of carrier rail
- ku = length of ball-bearing carriage
- kug = length of ball-bearing carriage
+ extension on both sides
to make possible to bend the ends
of the ball-bearing carriage
(dimension definition by GEZE)
- l = dimension of limit stop
- q = built-in buffer

GEZE PERKEO AND LINEAR GUIDES

Calculation formula

$$f = c + d + 2l$$

$$f = c + d + 2q$$

$$ku = c/2 + d$$

(the dimensions c and d must be specified when ordering)

Note:

$$f = \text{max. } 5500 \text{ mm}$$

(greater lengths on request)

With P75-1 ku must be divisible by 17.

Balance of dimensions by c or d.

With P75-2 and 3 the partition of the ball-bearing carriage can be chosen arbitrarily (max. 86 mm).

With rough strain (agitations) and at a very short track length (d) less than approx. 250 mm, the balls (partition) will be tight (must be specified when ordering).

If limiting is desired, please state type of limiter.

The limit stops serve only the protection of the ball-bearing carriage and cannot be used for stroke limiting.

If drill holes in the carrier rail or in the track are desired these drill holes must be specified within a sketch.

For hole spacing choose modular dimensions of 50 mm (e.g. 50, 100, 150 usw.) if possible.

Without specification the carrier guide and track will be delivered unbored.

Dimension	P 75-1	P 75-2	P 75-3
l = limit stop (mm)	15	20	20
q = built-in buffer (mm)	24	33	42
d1 (mm)	5,3	6,4	8,4
d2 (mm)	10,4	12,4	17,2
d3 standard	M5	M8	M8
d3 max.	M5	M8	M10

Weight (kg)	P 75-1	P 75-2	P 75-3
f = carrier guide by metre	1,410	3,430	5,000
d = track by metre	0,580	1,750	2,900
ku = ball-bearing carriage with 10 ball holders and 20 balls	0,182	0,320	0,468

Load max. (N)	P 75-1	P 75-2	P 75-3
These specifications are only valid with centric vertically load and with a track length d of min. 350 mm for P 75-1 min. 500 mm for P75-2	1000	1500	2000
* for track length d = 1000 mm	1400	1900	2500

GEZE PERKEO AND LINEAR GUIDES

GEZE Linear guides P 1, 2, 4

Product features

- Linear parallel guide.
The structural units will be moved in the required direction and in the same time the load is borne.
- The guidance consists of carrier rail and track with steel balls which are guided between, according to the principle of a ball-bearing.
- Ball-bearing carrier guides and track assure a deadlock-free running by means of a low friction coefficient and minor starting resistance.
- Small installation dimensions
- Easy and uncomplicated installation
- Low frictional coefficient
- Stroke limitation by built-in buffer

Application range

For cases in which a high load capacity and an accurate heading or stroke movement is needed.

In special design the linear guides can be delivered in inward and outward bent version with a radius of curvature R: ... mm

Standard version

Made of blank steel and galvanised on request.

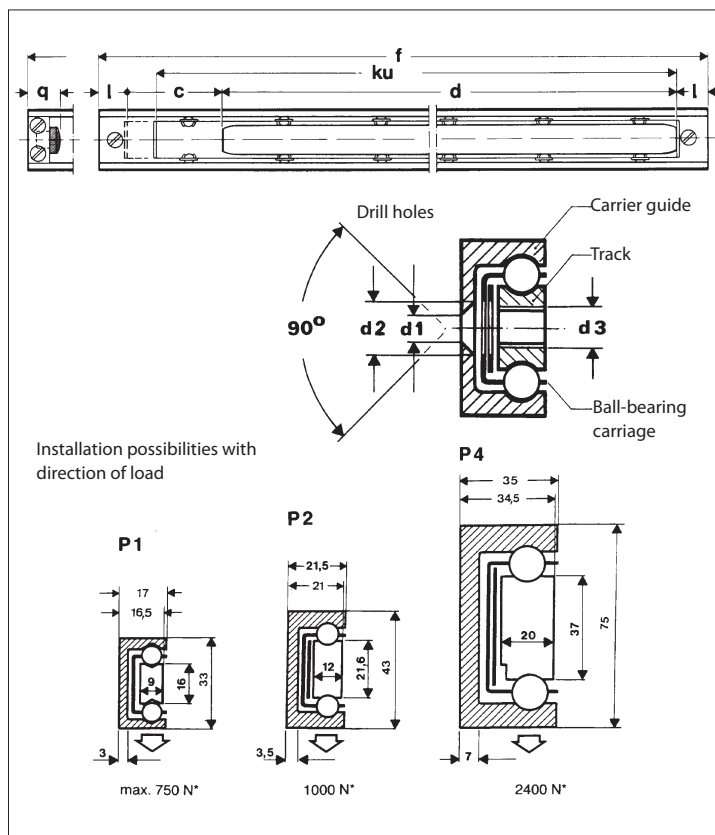


Fig. 14-1

Legend

- c = travel (stroke)
- d = length of track
- f = length of carrier guide
- ku = length of ball-bearing carriage
- kug = length of ball-bearing carriage
+ extensions on both sides
to make possible to bend the
ends of the ball-bearing carriage
(dimension definition by GEZE)
- l = dimension of limit stop
- q = built-in buffer

GEZE PERKEO AND LINEAR GUIDES

Calculation formula

$$f = c + d + 2l$$

$$f = c + d + 2q$$

$$ku = c/2 + d$$

(the dimensions c and d must be specified when ordering)

Note:

$$f = \text{max. } 5500 \text{ mm}$$

(greater lengths on request)

With P-1 ku must be divisible by 17.

Balance of dimensions by c or d.

With P-2 the partition of the ball-bearing carriage can be chosen arbitrarily (max. 86 mm).

With rough strain (agitations) and at very short track lengths (d) less than approx. 250 mm, the balls (partition) will be tight (must be specified when ordering).

If limiting is desired, please state type of limiter.

The limit stops serve only the protection of the ball-bearing carriage and cannot be used for stroke limiting.

If drill holes in the carrier rail or in the track are desired these drill holes must be specified within a sketch.

For hole spacing choose modular dimensions of 50 mm (e.g. 50, 100, 150 usw.) if possible.

Without specification the carrier guide and track will be delivered unbored.

Dimensions	P 1	P 2	P 4
l = limit stop (mm)	15	20	20
q = built-in buffer (mm)	18	25	32
d1 (mm)	5,3	6,4	10,5
d2 (mm)	10,4	12,4	21,5
d3 standard	M6	M8	M12
d3 max.	M8	M10	M20

Weight (kg)	P 1	P 2	P 4
f = carrier guide by metre	1,400	2,590	8,050
d = track by metre	0,860	1,860	5,220
ku = ball-bearing carriage with 10 ball holders and 20 balls	0,193	0,421	1,195

Load max. (N)	P 1	P 2	P 4
These specifications are only valid with centric vertically load and with a track length d of min. 350 mm for P 75-1 min. 500 mm for P75-2	750	1000	2000
* from track length d = 1000 mm	1000	1400	3600

GEZE GmbH
P.O. Box 1363
71226 Leonberg
Germany

GEZE GmbH
Reinhold-Vöster-Straße 21-29
71229 Leonberg
Germany
Telefon +49 (0) 7152-203-0
Telefax +49 (0) 7152-203-310

www.geze.com

Germany
GEZE Sonderkonstruktionen GmbH
Planken 1
97944 Boxberg-Schweigern
Tel. +49 (0) 7930-9294-0
Fax +49 (0) 7930-9294-10
E-Mail: sk.de@geze.com

GEZE GmbH
Niederlassung Nord/Ost
Bühningstraße 8
13086 Berlin (Weissensee)
Tel. +49 (0) 30-47 89 90-0
Fax +49 (0) 30-47 89 90-17
E-Mail: berlin.de@geze.com

GEZE GmbH
Niederlassung West
Nordsternstraße 65
45329 Essen
Tel. +49 (0) 201-83082-0
Fax +49 (0) 201-83082-20
E-Mail: essen.de@geze.com

GEZE GmbH
Niederlassung Mitte
Adenauerallee 2
61440 Oberursel (b. Frankfurt)
Tel. +49 (0) 6171-63610-0
Fax +49 (0) 6171-63610-1
E-Mail: frankfurt.de@geze.com

GEZE GmbH
Niederlassung Süd
Reinhold-Vöster-Straße 21-29
71229 Leonberg
Tel. +49 (0) 7152-203-594
Fax +49 (0) 7152-203-438
E-Mail: leonberg.de@geze.com

GEZE Service GmbH NL Südwest
Reinhold-Vöster-Straße 25
71229 Leonberg
Tel. +49 (0) 7152-92 33 34

GEZE Service GmbH NL Nord-Ost
Bühningstraße 8
13086 Berlin (Weissensee)
Tel. +49 (0) 30-47 02 17 32

GEZE Service GmbH NL West
Nordsternstraße 65
45329 Essen
Tel. +49 (0) 201-8 30 82 16

GEZE Service GmbH NL Mitte
Adenauerallee 2
61440 Oberursel
Tel. +49 (0) 6171-63 61 03

GEZE Service GmbH NL Süd
Keltenring 10
85658 Eggening
Tel. +49 (0) 8095-87 13 61

Austria
GEZE Austria GmbH
Mayrwiesstraße 12
5300 Hallwang b. Salzburg
Tel. +43 (0) 662-66 31 42
Fax +43 (0) 662-66 31 42-15
E-Mail: austria.at@geze.com

Baltic States
GEZE GmbH Baltic States office
Dzelzavas iela 120 S
1021 Riga
Tel. +371 (0) 6789-60 35
Fax +371 (0) 6789-60 36
E-Mail: office-latvia@geze.com

Benelux
GEZE Benelux B.V.
Leemkuil 1
Industrieterrein Kapelbeemd
5626 EA Eindhoven
Tel. +31 (0) 40-26 290-80
Fax +31 (0) 40-26 290-85
E-Mail: benelux.nl@geze.com

Bulgaria
GEZE Bulgaria - Trade
Representative Office
61 Pirinski Prohod, entrance „B“,
4th floor, office 5,
1680 Sofia
Tel. +359 (0) 24 70 43 73
Fax +359 (0) 24 70 62 62
E-Mail: office-bulgaria@geze.com

China
GEZE Industries (Tianjin) Co., Ltd.
Shuangchenzhong Road
Beichen Economic Development
Area (BEDA)
Tianjin 300400, P.R. China
Tel. +86 (0) 22-26 97 39 95-0
Fax +86 (0) 22-26 97 27 02
E-Mail: Sales-info@geze.com.cn

GEZE Industries (Tianjin) Co., Ltd.
Branch Office Shanghai
Unit 25N, Cross Region Plaza
No 899, Ling Ling Road,
Xuhui District
200030 Shanghai, P.R. China
Tel. +86 (0) 21-52 34 09 60
Fax +86 (0) 21-64 47 20 07
E-Mail: chinasales@geze.com.cn

GEZE Industries (Tianjin) Co., Ltd.
Branch Office Guangzhou
Room 17C3
Everbright Bank Building, No.689
Tian He Bei Road
510630 Guangzhou
P.R. China
Tel. +86 (0) 20-38 73 18 42
Fax +86 (0) 20-38 73 18 34
E-Mail: chinasales@geze.com.cn

GEZE Industries (Tianjin) Co., Ltd.
Branch Office Beijing
Rm3A02, Building 3
ZhuBang 2000 Business Plaza
No.98, Balizhuang xili
Chaoyang District
100025 Beijing, P.R.China
Tel. +86 (0) 10-879 75 177-78
Fax +86 (0) 10-879 75 171
E-Mail: chinasales@geze.com.cn

France
GEZE France S.A.R.L.
ZAC de l'Orme Rond
RN 19
77170 Servon
Tel. +33 (0) 1-60 62 60-70
Fax +33 (0) 1-60 62 60-71
E-Mail: france.fr@geze.com

Hungary
GEZE Hungary Kft.
Bartók Béla út 105-113.
Budapest
H-1115
Tel. +36 (1) 481 46 70
Fax +36 (1) 481 46 71
E-Mail: office-hungary@geze.com

Iberia
GEZE Iberia S.R.L.
Pol. Ind. El Pla
C/Comerc, 2-22, Nave 12
08980 Sant Feliu de Llobregat
(Barcelona)
Tel. +34 (0) 9-02 19 40 36
Fax +34 (0) 9-02 19 40 35
E-Mail: info@geze.es

India
GEZE India Private Ltd.
MF 2 & 3, Guindy Industrial Estate
Ekkattuthangal
Chennai 600 097
Tamilnadu
Tel. +91 (0) 44 30 61 69 00
Fax +91 (0) 44 30 61 69 01
E-Mail: office-india@geze.com

Italy
GEZE Italia Srl
Via Giotto, 4
20040 Cambiago (MI)
Tel. +39 (0) 29 50 695-11
Fax +39 (0) 29 50 695-33
E-Mail: italia.it@geze.com

GEZE Engineering Roma Srl
Via Lucrezia Romana, 91
00178 Roma
Tel. +39 (0) 6-72 65 311
Fax +39 (0) 6-72 65 31 36
E-Mail: roma@geze.biz

Poland
GEZE Polska Sp. z o.o.
ul. Annopol 21
03-236 Warszawa
Tel. +48 (0) 22 440 4 440
Fax +48 (0) 22 440 4 400
E-Mail: geze.pl@geze.com

Romania
GEZE Romania s.r.l.
IRIDE Business Park,
Str. Dimitrie Pompeiu nr. 9-9a,
Building 10, Level 2, Sector 2,
020335 Bucharest
Tel.: +40 (0) 21 25 07 750
Fax: +40 (0) 21 25 07 750
E-Mail: office-romania@geze.com

Russian Federation
GEZE GmbH Representative
Office Russia
Kolodesnij pereulok3, str. 25
Office Nr. 5201-5203
107076 Moskau
Tel. +7 (0) 49 55 89 90 52
Fax +7 (0) 49 55 89 90 51
E-Mail: office-russia@geze.com

Scandinavia – Sweden
GEZE Scandinavia AB
Mallslingan 10
Box 7060
18711 Täby, Sweden
Tel. +46 (0) 8-73 23-400
Fax +46 (0) 8-73 23-499
E-Mail: sverige.se@geze.com

Scandinavia – Norway
GEZE Scandinavia AB avd. Norge
Industriveien 34 B
2073 Dal
Tel. +47 (0) 639-57 200
Fax +47 (0) 639-57 173
E-Mail: norge.se@geze.com

Scandinavia – Finland
Branch office of GEZE Scandinavia AB
Herralanatie 824
Postbox 20
15871 Hollola
Tel. +358 (0)10-40 05 100
Fax +358 (0)10-40 05 120
E-Mail: finland.se@geze.com

Scandinavia – Denmark
GEZE Danmark
Branch office of GEZE Scandinavia AB
Høje Taastrup Boulevard 53
2630 Taastrup
Tel. +45 (0) 46-32 33 24
Fax +45 (0) 46-32 33 26
E-Mail: danmark.se@geze.com

South Africa
DCLSA Distributors (Pty.) Ltd.
118 Richards Drive, Halfway House,
Ext 111
P.O. Box 7934, Midrand 1685
Tel. +27 (0) 11 31 58 286
Fax +27 (0) 11 31 58 261
E-Mail: info@dclsa.co.za

Switzerland
GEZE Schweiz AG
Bodenackerstrasse 79
4657 Dulliken
Tel. +41 (0) 62-28 55 400
Fax +41 (0) 62-28 55 401
E-Mail: schweiz.ch@geze.com

Turkey
GEZE GmbH Türkiye - İstanbul
İrtibat Bürosu
Ataşehir Bulvarı, Ata 2/3
Plaza Kat: 9 D: 84 Ataşehir
Kadıköy / İstanbul
Tel. + 90 (0) 21 64 55 43 15
Fax + 90 (0) 21 64 55 82 15
E-Mail: office-turkey@geze.com

Ukraine
Repräsentanz GEZE GmbH Ukraine
ul. Vikentiya Hvoyki, 21,
office 151
04080 Kiev
Tel. +38 (0) 44 49 97 725
Fax +38 (0) 44 49 97 725
E-Mail: office-ukraine@geze.com

United Arab Emirates/GCC
GEZE Middle East
P.O. Box 17903
Jebel Ali Free Zone
Dubai
Tel. +971 (0) 4-88 33 112
Fax +971 (0) 4-88 33 240
E-Mail: geze@emirates.net.ae

United Kingdom
GEZE UK Ltd.
Blenheim Way
Fradley Park
Lichfield
Staffordshire WS13 8SY
Tel. +44(0)1543 44 30 00
Fax +44 (0)1543 44 30 01
E-Mail: info.uk@geze.com

GEZE REPRESENTATIVE